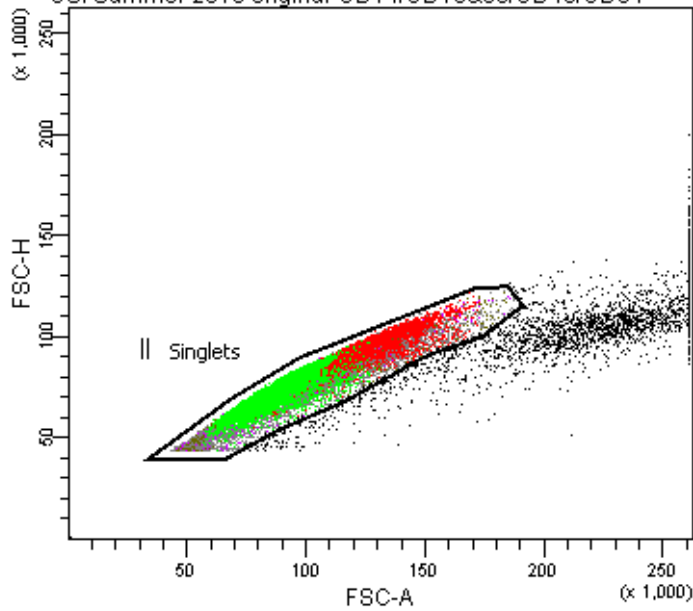
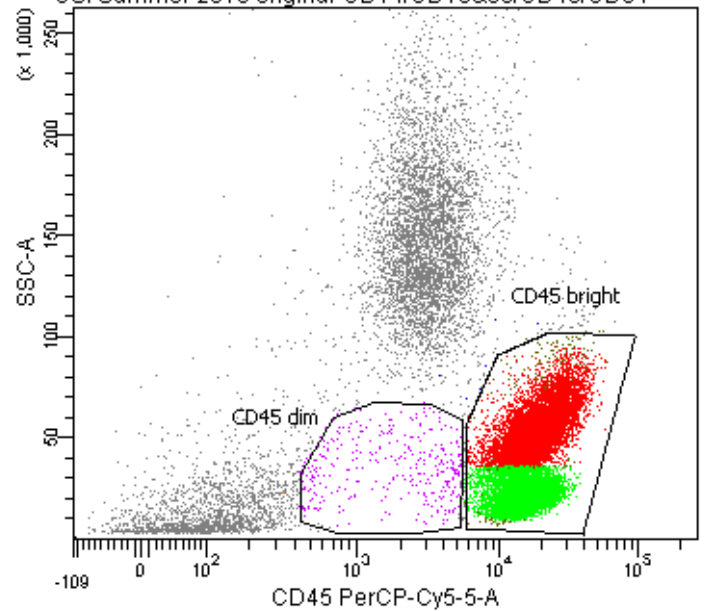


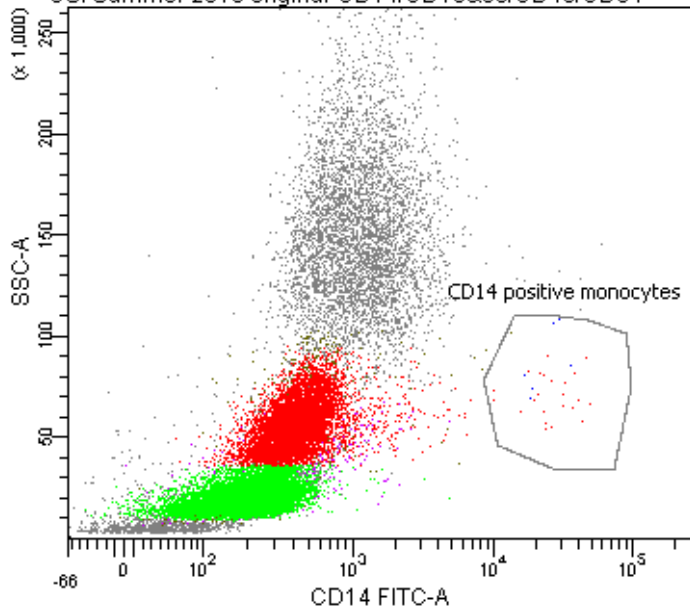
CSI Summer 2010 original-CD14/CD13&33/CD45/CD34



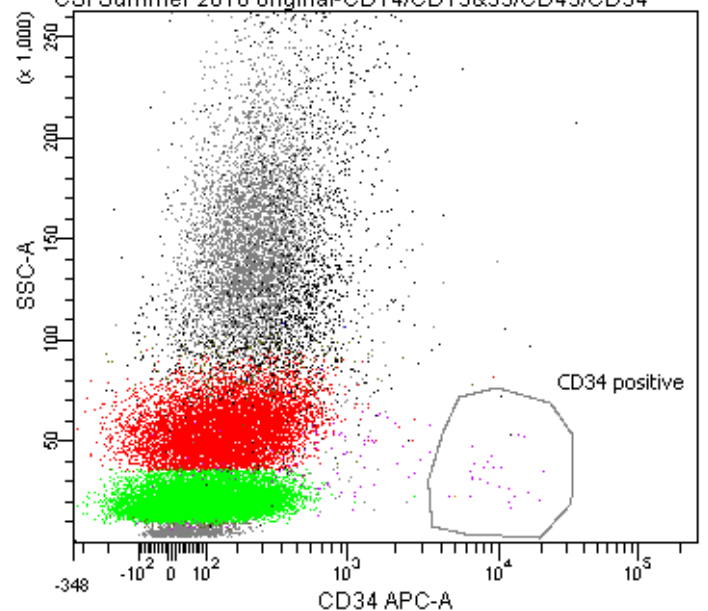
CSI Summer 2010 original-CD14/CD13&33/CD45/CD34



CSI Summer 2010 original-CD14/CD13&33/CD45/CD34



CSI Summer 2010 original-CD14/CD13&33/CD45/CD34



Tube: CD14/CD13&33/CD45/CD34

Population	#Events	%Parent	%Total
All Events	30,000	###	100.0
Singlets	27,308	91.0	91.0
CD14 positive monocytes	30	0.1	0.1
CD34 positive	25	0.1	0.1
CD45 dim	355	1.3	1.2
CD45 bright	20,368	74.6	67.9
Intermediate SSC	7,976	39.2	26.6
low SSC	12,024	59.0	40.1

CSI Summer 2010 original-CD14/CD13&33/CD45/CD34

