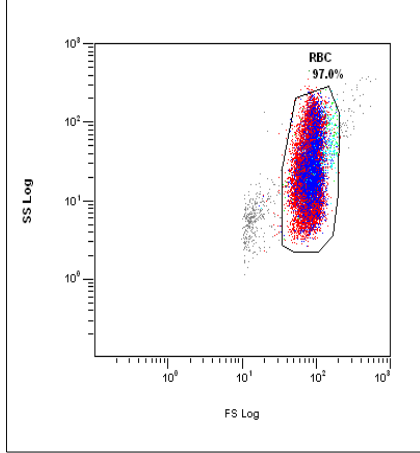
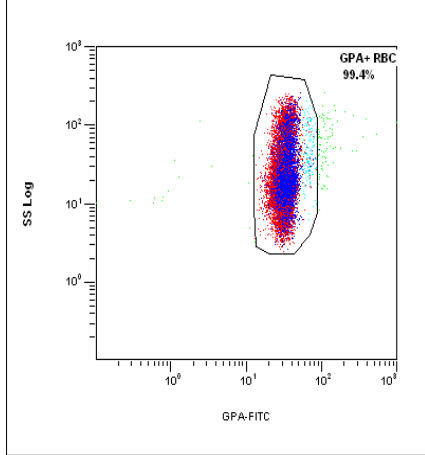


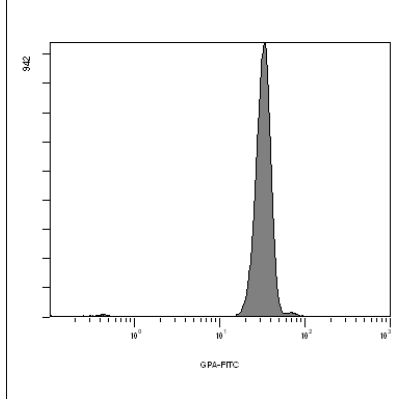
F1[Ungated] ICCS PNH POSITIVE - 0582 GPA-59-X-X-X.LMD : FS Log/SS Log - ADC



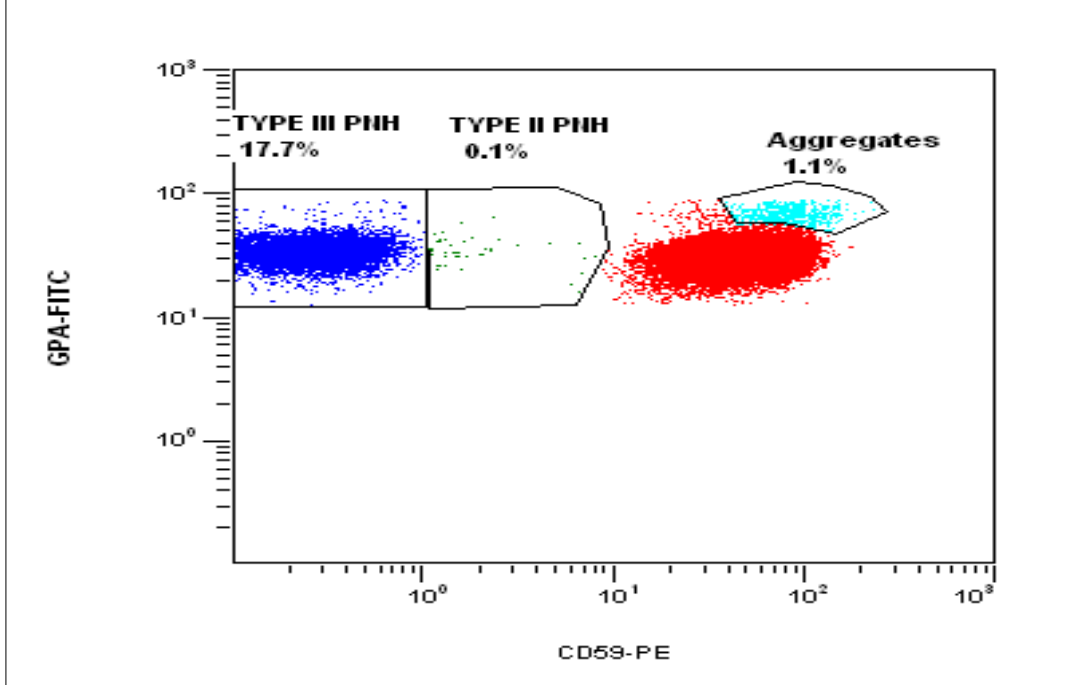
F1[RBC] ICCS PNH POSITIVE - 0582 GPA-59-X-X-X.LMD : FL1 Log/SS Log - ADC



F1[Ungated] ICCS PNH POSITIVE - 0582 GPA-59-X-X-X.LMD : FL1 Log - ADC



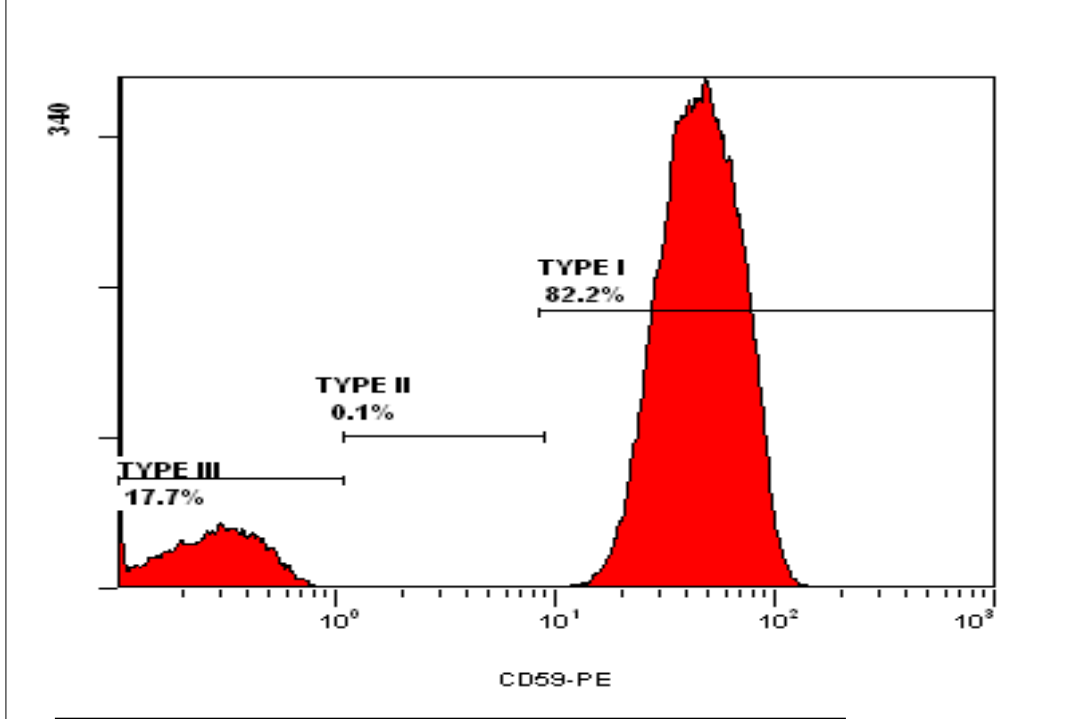
F1[GPA+ RBC] ICCS PNH POSITIVE - 0582 GPA-59-X-X-X.LMD : FL2 Log/FL1 Log - ADC



(F1)[GPA+ RBC] ICCS PNH POSITIVE - 0582 GPA-59-X-X-X.LMD : FL2 Log/FL1 Log

Region	Number	%Gated	X-Mean	Y-Mean
ALL	50432	100.00	40.4	33.2
Aggregates	546	1.08	85.9	69.7
TYPE II PNH	43	0.09	2.34	37.8
TYPE III PNH	8931	17.71	0.25	35.7

F1[GPA+ RBC] ICCS PNH POSITIVE - 0582 GPA-59-X-X-X.LMD : FL2 Log - ADC



(F1)[GPA+ RBC] ICCS PNH POSITIVE - 0582 GPA-59-X-X-X.LMD : FL2 Log

Region	Number	%Gated	X-Mean	Y-Mean
TYPE I	41450	82.2	35.7	33.2
TYPE II	43	0.1	2.34	37.8
TYPE III	8931	17.7	0.25	35.7