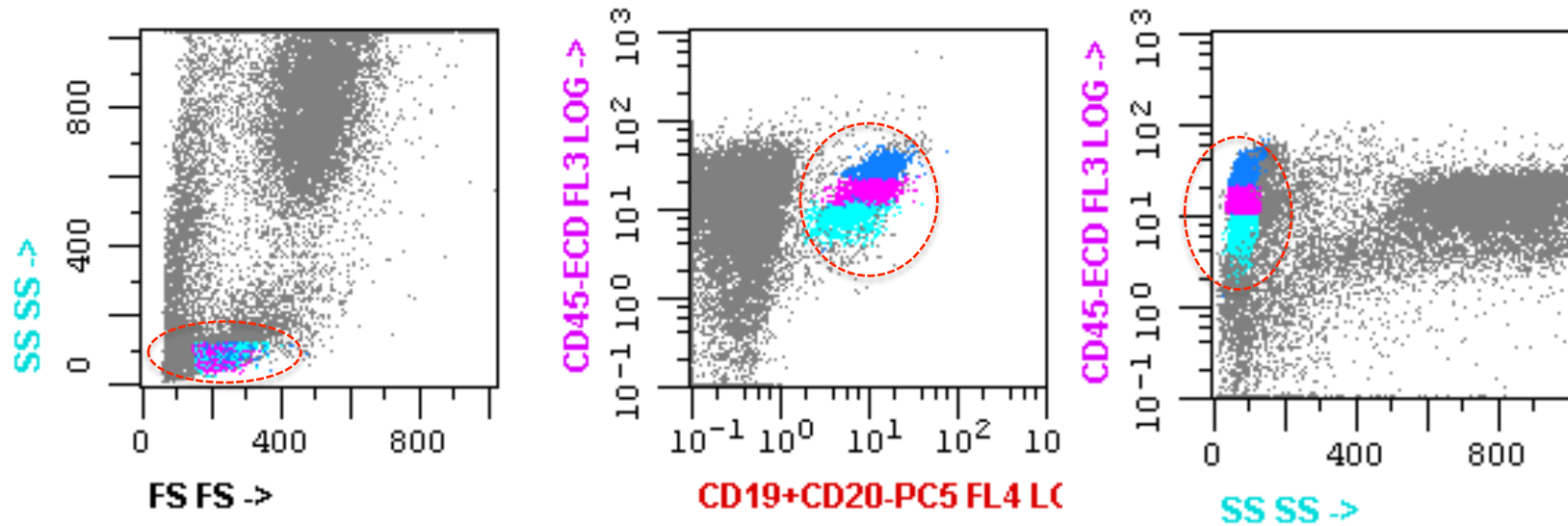


Flow cytometric analysis

- Acquisition Beckman Coulter Epics XL (FCS2.0, System II)
- Analyzed by Paint-A-Gate software (adapted to Coulter)
- Tubes (FITC/PE/ECD/PC5)
 - Tube 1: Kappa/lambda/45/19+20
 - Tube 2: 5/19/45/10
 - Tube 3 : 8/4/45/38
 - Tube 4: 15/117/45/34
 - Tube 5: 20/10/19/38
 - Tube 6: FMC-7/23/5/19
 - Tube 7: Kappa/Lambda/5/19

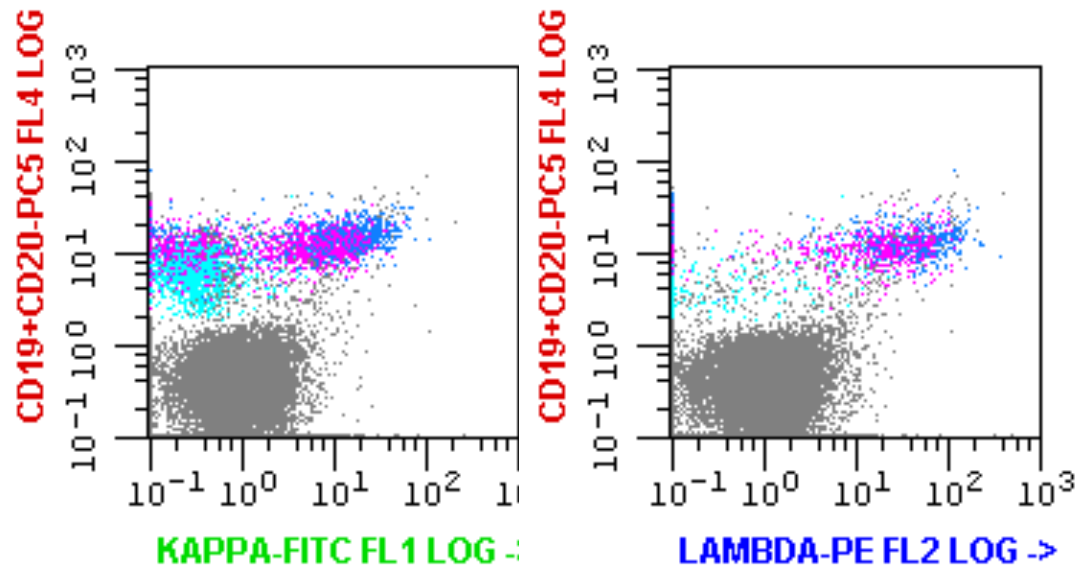
Tube 1: Kappa/lambda/45/19+20



A population of (CD19/20)+ B cells divided into 3 subsets based on intensity of CD45

- **Blue** (strong CD45)
- **Violet** (intermediate CD45)
- **Cyan** (dim CD45)

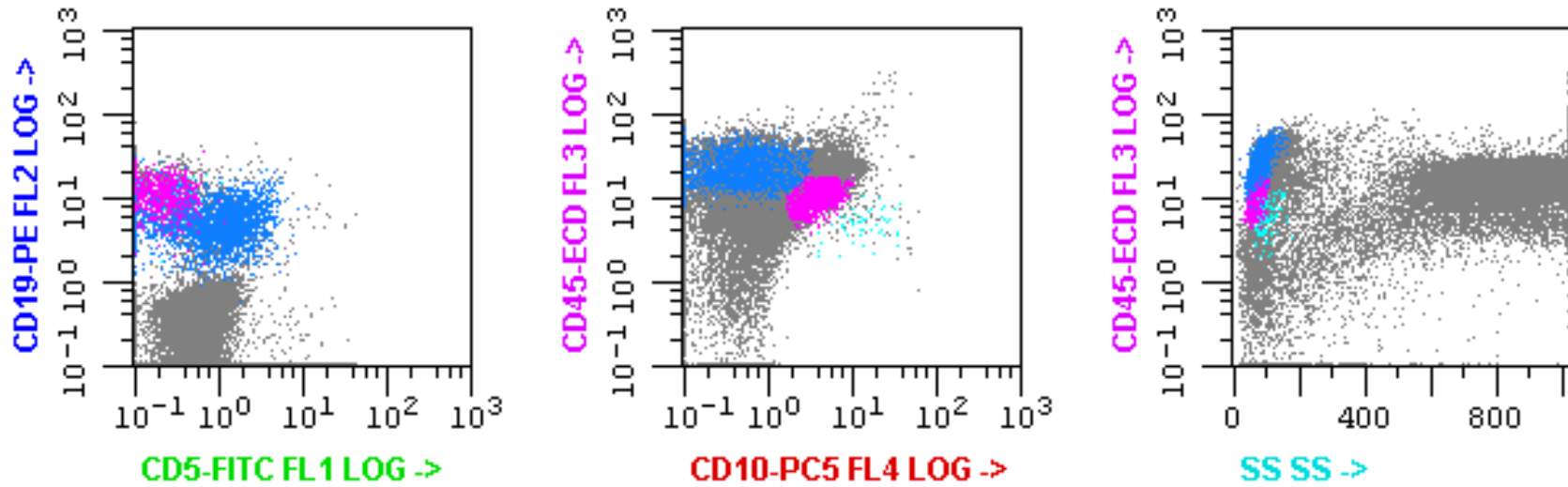
Tube 1: Kappa/lambda/45/19+20



CD(19/20)+ B cells showing variable, polytypic light chain expression

- **Blue** (strong CD45): polytypic surface Ig expression
- **Violet** (intermediate CD45): a subset polytypic sIg
- **Cyan** (dim CD45): no surface Ig

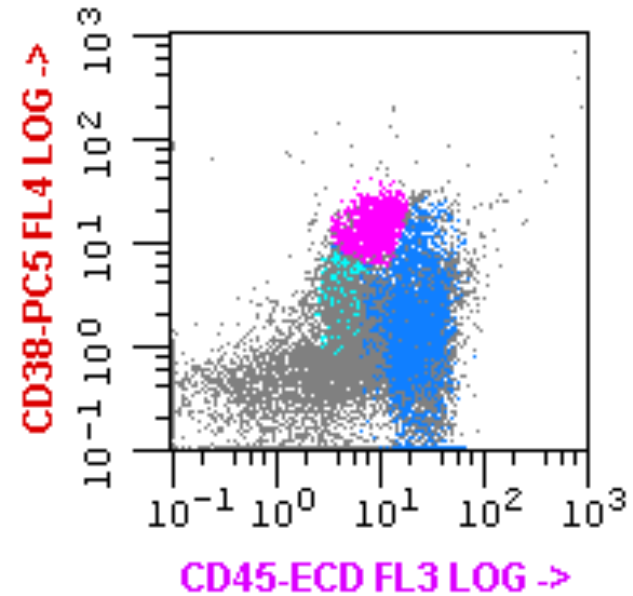
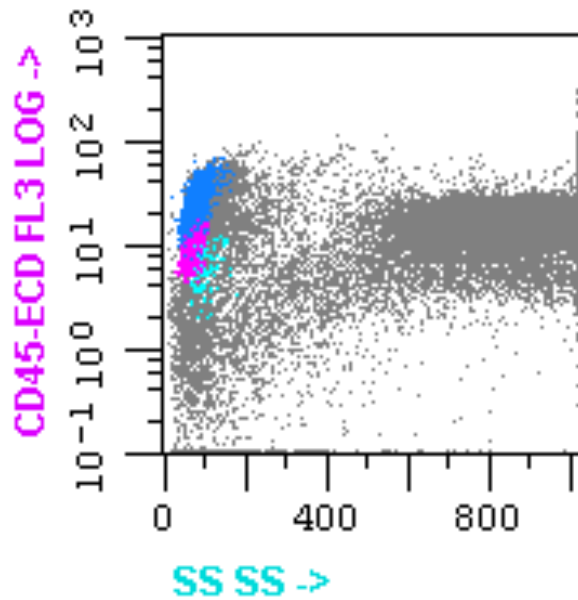
Tube 2: 5/19/45/10



Differential expression of CD5 and CD10 on 3 subsets of B cells

- **Blue** (subset CD5⁺, CD10⁻)
- **Violet** (CD5⁻, CD10⁺)
- **Cyan** (CD5⁻, CD10^{bright+})

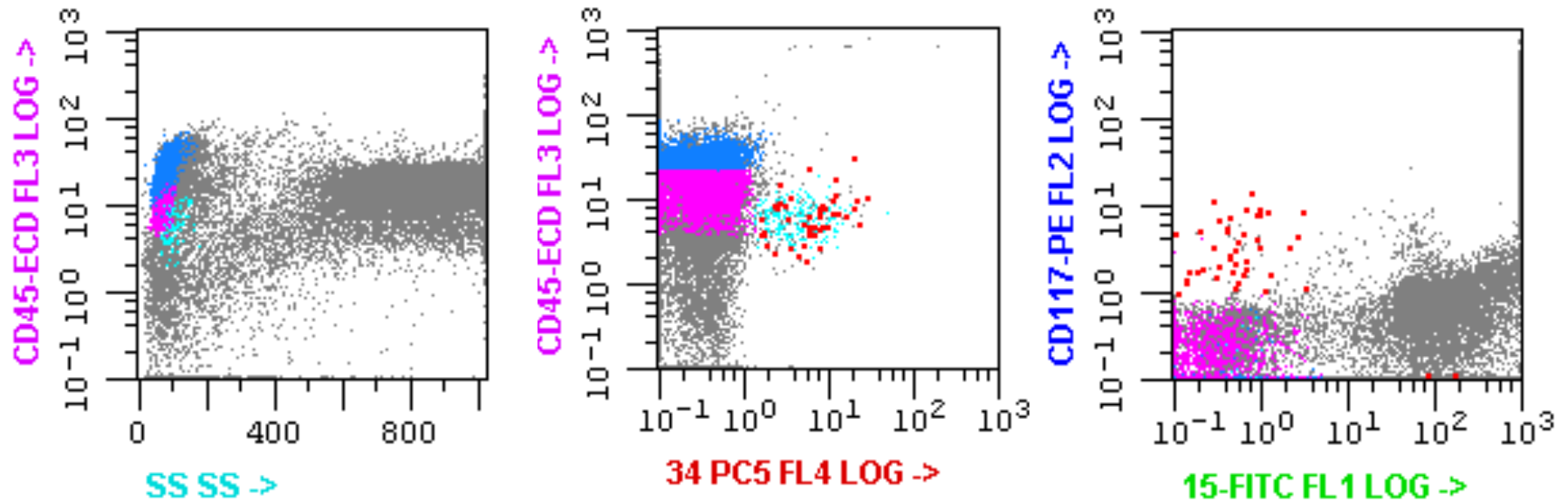
Tube 3 : 8/4/45/38



Differential expression of CD38 on 3 subsets of B cells

- **Blue** (CD38^{variable/partial} +)
- **Violet** (CD38^{uniform strong} +)
- **Cyan** (CD38⁺)

Tube 4: 15/117/45/34

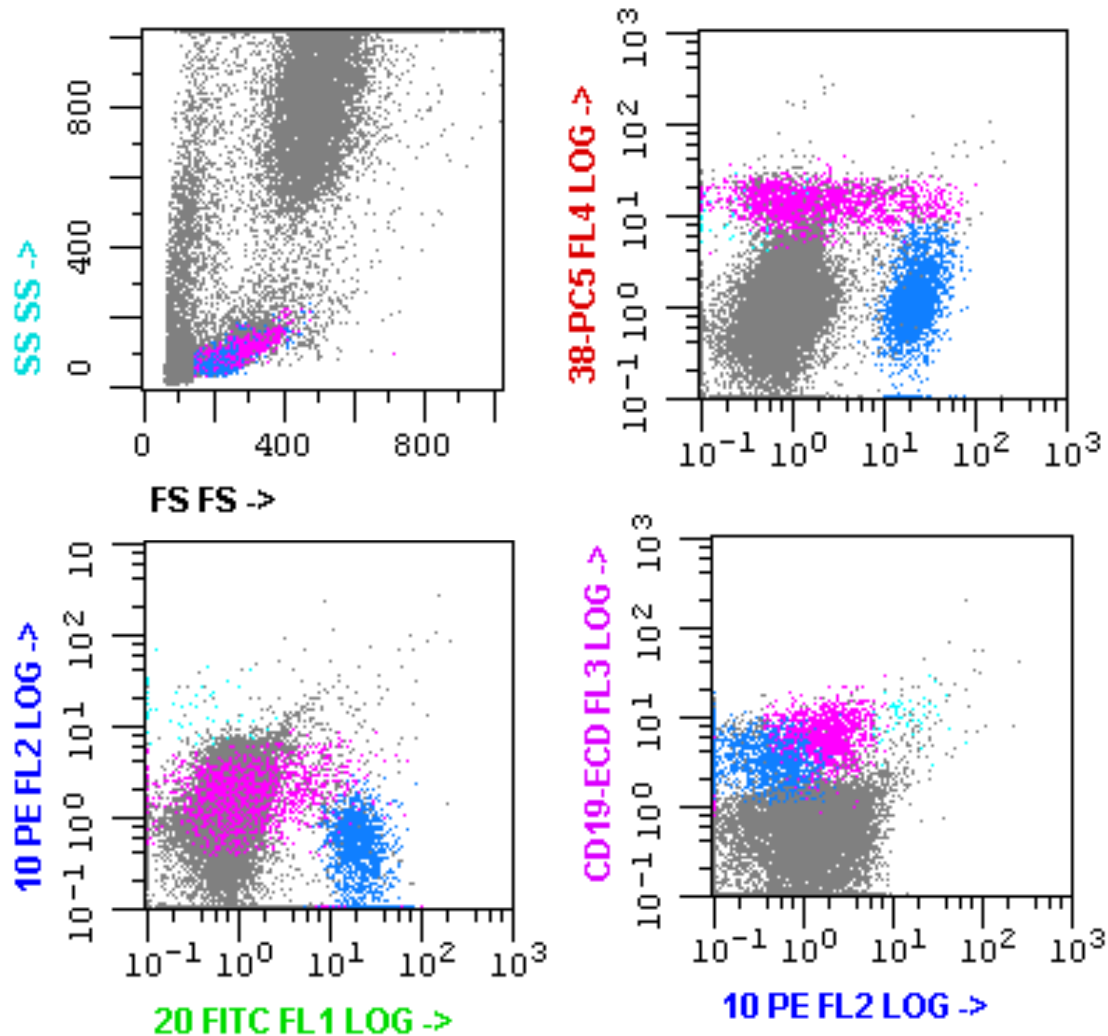


Differential expression of CD34 on 3 subsets of B cells

- **Blue** (CD34⁻)
- **Violet** (CD34⁻)
- **Cyan** (CD38⁺)

Of note, myeloblasts in red express CD117 and CD34

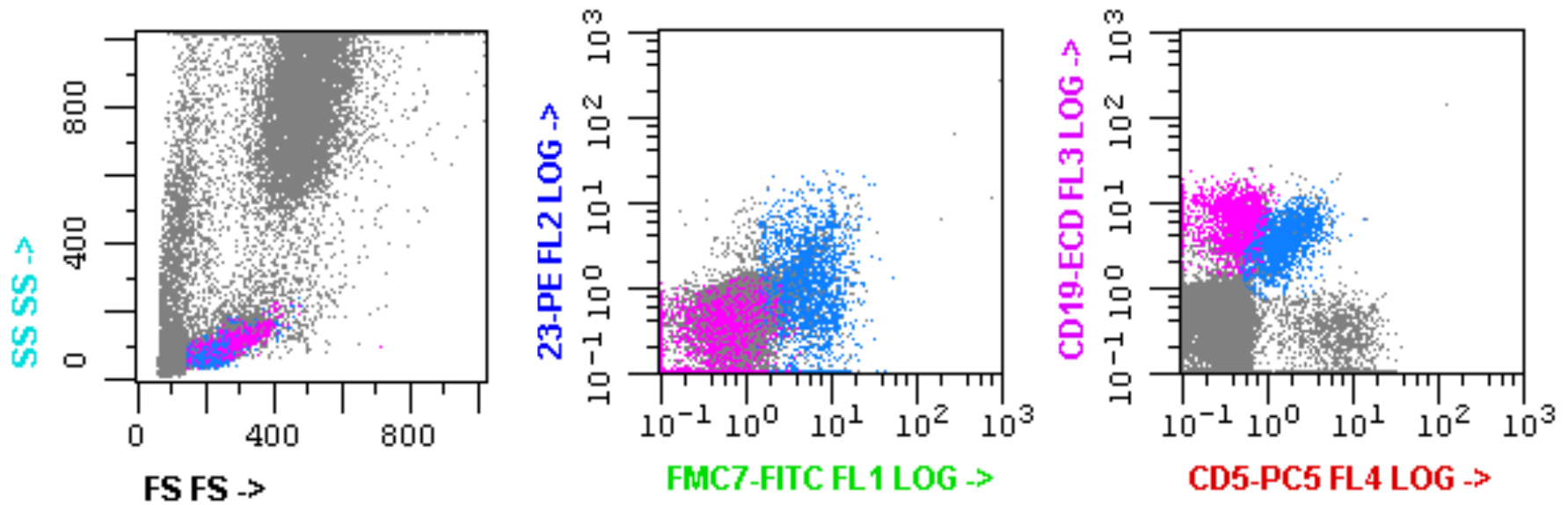
Tube 5: 20/10/19/38



Differential expression of CD10, 20 and CD38 on 3 subsets of CD19(+) B cells

- **Blue** (CD10⁻, CD20⁺, CD38^{variably/partial+})
- **Violet** (CD10⁺, CD20^{variably+}, CD38^{uniform+})
- **Cyan** (CD10^{bright+}, CD20⁻, CD38⁺)

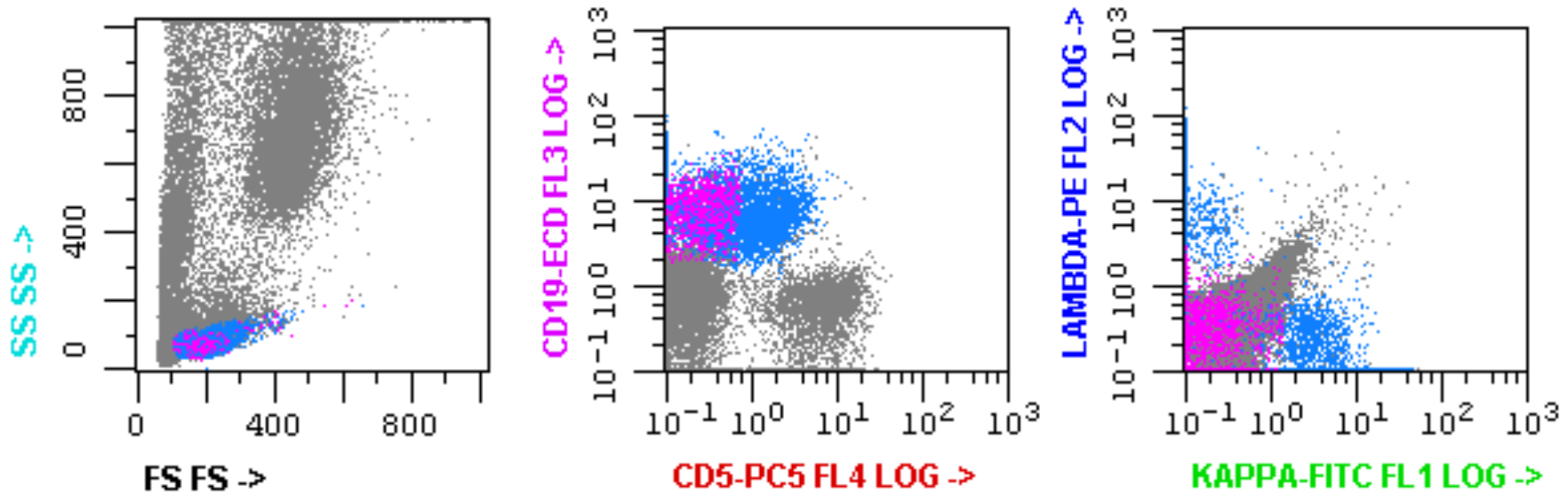
Tube 6: FMC-7/23/5/19



Differential expression of CD5, CD23 and FMC7 on 3 subsets of CD19(+) B cells

- **Blue** (CD5^{subset+}, CD23^{partial +}, FMC7⁺)
- **Violet** (CD5^{subset+}, CD23⁻, FMC7⁻)
- **Cyan** (CD5⁻, CD23⁻, FMC7⁻)

Tube 7: Kappa/Lambda/5/19



Differential expression of surface Ig and CD5 on subsets of CD19(+) B cells

- **Blue** (CD5⁺, sIg^{polytypic})
- **Violet** (CD5^{predominantly -}, sIg⁻)

[In addition, CD13⁻, CD33⁻ (data not shown); Tdt not tested]